

possible, using Times Roman 10pt typeface. Ensure that the typing area matches the following sizes: **115 mm width and 190mm height**. Do not number pages on the front, as page numbers will be added separately for the Proceedings. Only papers presented at the Conference will be accepted for publication.

2 Preparation of the Camera Ready Paper

The paper should be typed using Times Roman 10pt size letter with single spacing between text lines.

2.1 Front Matter (Title, affiliation(s), abstract and keywords)

The first line of title is located 2 lines (24pt) from the top of printing box. This space is reserved for Editorial Heading. The title of the paper should be written centered, single spaced, in 14pt size bold capital letters. The title must not exceed three lines. The author's name should include first and middle (if any) name initial, and surname. It should be written centered, in 12pt size bold face letter, one line (12pt) below the title. Author's affiliation should be written centered, in 11pt size italic letter with one line (12pt) space below the list of authors. Following the author's names and affiliations put the abstract no more than 150 words. The abstract should be written in 9pt size letter with one line (12pt) space below the affiliations. The 12pt space should separate the keywords line from the abstract. This line should be written left aligned to the margin of abstract and must begin with words '**Keywords:**' written in the normal 9pt size bold letter. Keywords should be written in 9pt size (see above).

2.2 Tables and Figures

Care should be taken over the preparation of diagrams, tables and figures. Tables must be set as part of the text. All tables must have a caption centered over the table and should be numbered sequentially and start with '**Table x:**' (x stands for a number).

Table 1: Airfoils and flow parameters

1-DOF Plunging Airfoil	
$b = 1\text{ft}$	$\rho = 0.0318\text{slugs/ft}^3$
$\zeta = 0.008$	$c = 2m\omega\zeta$
$m = 10\text{ slugs/ft}$	$k = \omega^2 m$
$\omega = 60\text{rad/s}$	$C_{L\alpha} = 2\pi$

Figures will either be entered in one column or two columns and should be **3 1/8"** or **6 1/2"** wide respectively. A minimum line width of 1 point is required at actual size. Annotations should be in 10 point with the first letter only capitalized. All figures should be numbered sequentially and captioned. The caption should be written centered below the figure and start with '**Figure x:**' (x stands for a number). Figures should be embedded in the document.

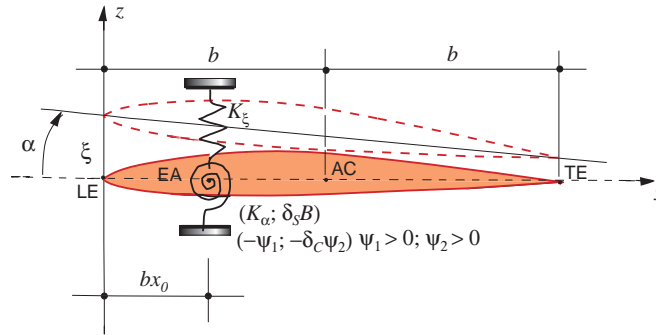


Figure 1: Characteristics of the wing section

2.3 About Equations

Equations should be prepared in Word with the appropriate equation editor. Each equation should occur on a new line with uniform spacing from adjacent text as indicated in this template. The equations, where they are referred to in the text, should be numbered sequentially and their identifier enclosed in parenthesis, right justified as indicated below. The punctuation should be used in equations as they were regular sentences.

$$E=mc^2. \quad (1)$$

$$E=mc^2. \quad (2)$$

Please pay attention that all variable references in text must be written the same style as in displayed equations. Above phrases are typed in full word when they appear as the first word of sentence. Citation of table(s) is always written in full word - Table x or Tables x, y. Please be consistent in the use of capital letters, abbreviations and punctuation.

3 General Style Preferences

Papers are accepted on the basis that they match high international standards of scientific writing. The author himself is responsible for the correctness of the scientific content. Abbreviations should be spelt out in full the first time they appear and their abbreviated form included in brackets immediately after. Do not use more than two level depth of headings.

3.1 Style of Writing

Papers are accepted on the basis that they match high international standards of scientific writing. The author himself is responsible for the correctness of the scientific content. Abbreviations should be spelt out in full the first time they

